



A Passion for Excellence



**NEENAH**  
Joint School District

STUDY DOCUMENT

**NEENAH JOINT  
SCHOOL DISTRICT**

Neenah, Wisconsin

Thursday | February 15, 2018

### **Neenah Joint School District | Administration Team**

Dr. Mary Pfeiffer, District Administrator/Superintendent  
Steve Dreger, Assistant District Administrator of Learning and Leadership  
Vicky Holt, Assistant District Administrator Human Resources/Instructional Support Services  
Adam Krieger, Director of Facilities/Engineer  
Timothy Gantz, Director of Pupil Services  
Jon Joch, Director of Revenue Enhancements  
Susan Hull, Director of Curriculum  
Matt Anderson, Director of Instructional Technology  
Andrew Thorson, Assistant District Administrator of Business Services

### **Neenah Joint School District | Board of Education**

Michelle Swardenski, President  
Jean Maurice Boyer, Vice President  
Betsy Ellenberger, Clerk  
Christopher Kunz, Treasurer  
Lauri Asbury, Member at Large  
Margaret Murphy, Member at Large  
John Lehman, Member at Large  
Scott Thompson, Member at Large  
John Van Meter, Member at Large

### **Bray Associates Architects, Inc.**

Matthew D. Wolfert, AIA, LEED AP, Principal | President  
Kara A. Albrecht, Associate AIA, Project Team Leader  
Tyler T. Kelly, Associate AIA, Architectural Intern

#### **Milwaukee Office**

829 S. 1st Street  
Milwaukee, WI 53204

#### **Sheboygan Office**

P.O. Box 955  
Sheboygan, WI 53082

### **HVAC | Fredericksen Engineering, Inc.**

Jason Testin, Mechanical Engineer | Principal

12308 Corporate Pkwy  
Suite 400  
Mequon, WI 53092

### **Electrical & Plumbing | Muermann Engineering**

Dan Cedeno, Electrical Engineer  
Leslie Fry, Plumbing Engineer

116 Fremont Street  
P.O. Box 235  
Kiel, WI 53042

### **Civil | Point of Beginning**

Lucas Meddaugh, Civil Engineer

5709 Windy Drive, Suite D  
Stevens Point, WI 54482



## TABLE OF CONTENTS

### i Introduction

#### 1 Section One: **Clayton Elementary**

- a. Building Evolution
- b. Existing Site Plan
- c. Existing Floor Plan
- d. Survey Feedback Summary
- e. Building Systems Summary
- f. Needs Assessment
- g. ADA Needs Assessment
- h. Roof Plan & Analysis
- i. Door Plan & Schedule
- j. Flooring Identification
- k. Engineer Reports

#### 2 Section Two: **Coolidge Elementary**

- a. Building Evolution
- b. Existing Site Plan
- c. Existing Floor Plan
- d. Survey Feedback Summary
- e. Building Systems Summary
- f. Needs Assessment
- g. ADA Needs Assessment
- h. Roof Plan & Analysis
- i. Door Plan & Schedule
- j. Flooring Identification
- k. Engineer Reports

#### 3 Section Three: **Hoover Elementary**

- a. Building Evolution
- b. Existing Site Plan
- c. Existing Floor Plan
- d. Survey Feedback Summary
- e. Building Systems Summary
- f. Needs Assessment
- g. ADA Needs Assessment
- h. Roof Plan & Analysis
- i. Door Plan & Schedule
- j. Flooring Identification
- k. Engineer Reports

#### 4 Section Four: **Lakeview Elementary**

- a. Building Evolution
- b. Existing Site Plan
- c. Existing Floor Plan
- d. Survey Feedback Summary
- e. Building Systems Summary
- f. Needs Assessment
- g. ADA Needs Assessment
- h. Roof Plan & Analysis
- i. Door Plan & Schedule
- j. Flooring Identification
- k. Engineer Reports



# TABLE OF CONTENTS

## 5 Section Five: **Roosevelt Elementary (Alliance Charter Elementary)**

- a. Building Evolution
- b. Existing Site Plan
- c. Existing Floor Plan
- d. Survey Feedback Summary
- e. Building Systems Summary
- f. Needs Assessment
- g. ADA Needs Assessment
- h. Roof Plan & Analysis
- i. Door Plan & Schedule
- j. Flooring Identification
- k. Engineer Reports

## 6 Section Six: **Spring Road Elementary**

- a. Building Evolution
- b. Existing Site Plan
- c. Existing Floor Plan
- d. Survey Feedback Summary
- e. Building Systems Summary
- f. Needs Assessment
- g. ADA Needs Assessment
- h. Roof Plan & Analysis
- i. Door Plan & Schedule
- j. Flooring Identification
- k. Engineer Reports

## 7 Section Seven: **Taft Elementary**

- a. Building Evolution
- b. Existing Site Plan
- c. Existing Floor Plan
- d. Survey Feedback Summary
- e. Building Systems Summary
- f. Needs Assessment
- g. ADA Needs Assessment
- h. Roof Plan & Analysis
- i. Door Plan & Schedule
- j. Flooring Identification
- k. Engineer Reports

## 8 Section Eight: **Tullar Elementary**

- a. Building Evolution
- b. Existing Site Plan
- c. Existing Floor Plan
- d. Survey Feedback Summary
- e. Building Systems Summary
- f. Needs Assessment
- g. ADA Needs Assessment
- h. Roof Plan & Analysis
- i. Door Plan & Schedule
- j. Flooring Identification
- k. Engineer Reports





## TABLE OF CONTENTS

### 9 Section Nine: **Washington School of Early Learning**

- a. Building Evolution
- b. Existing Site Plan
- c. Existing Floor Plan
- d. Survey Feedback Summary
- e. Building Systems Summary
- f. Needs Assessment
- g. ADA Needs Assessment
- h. Roof Plan & Analysis
- i. Door Plan & Schedule
- j. Flooring Identification
- k. Engineer Reports

### 10 Section Ten: **Wilson Elementary**

- a. Building Evolution
- b. Existing Site Plan
- c. Existing Floor Plan
- d. Survey Feedback Summary
- e. Building Systems Summary
- f. Needs Assessment
- g. ADA Needs Assessment
- h. Roof Plan & Analysis
- i. Door Plan & Schedule
- j. Flooring Identification
- k. Engineer Reports

### 11 Section Eleven: **Horace Mann Middle School**

- a. Building Evolution
- b. Existing Site Plan
- c. Existing Floor Plan
- d. Survey Feedback Summary
- e. Building Systems Summary
- f. Needs Assessment
- g. ADA Needs Assessment
- h. Roof Plan & Analysis
- i. Door Plan & Schedule
- j. Flooring Identification
- k. Engineer Reports

### 12 Section Twelve: **Shattuck Middle School**

- a. Building Evolution
- b. Existing Site Plan
- c. Existing Floor Plan
- d. Survey Feedback Summary
- e. Building Systems Summary
- f. Needs Assessment
- g. ADA Needs Assessment
- h. Roof Plan & Analysis
- i. Door Plan & Schedule
- j. Flooring Identification
- k. Engineer Reports



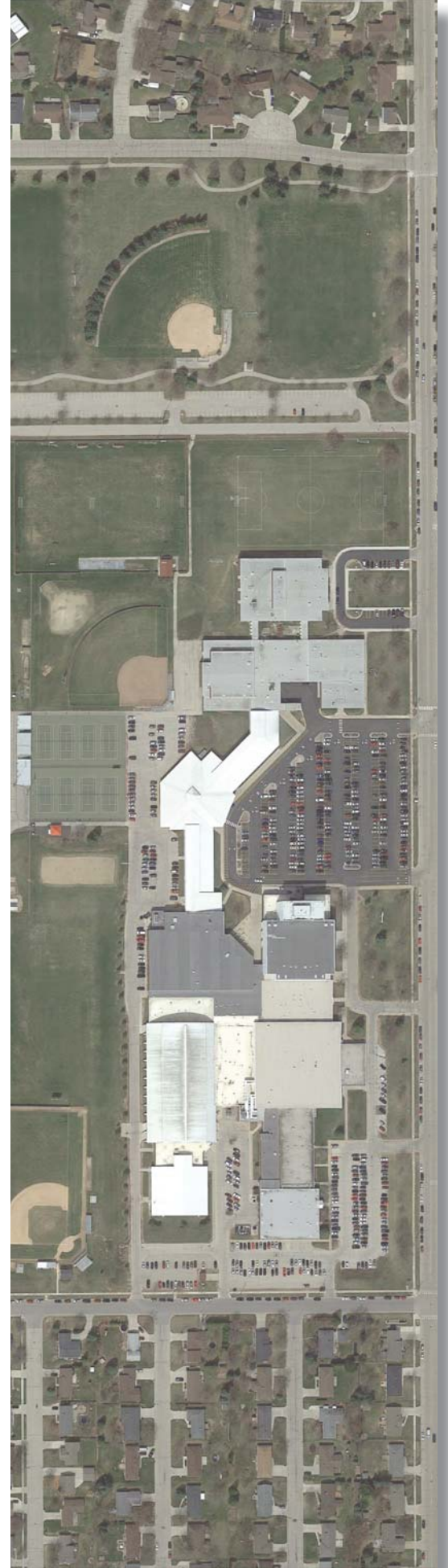
# TABLE OF CONTENTS

## 13 Section Thirteen: **Neenah High School**

- a. Building Evolution
- b. Existing Site Plan
- c. Existing Floor Plan
- d. Survey Feedback Summary
- e. Building Systems Summary
- f. Needs Assessment
- g. ADA Needs Assessment
- h. Roof Plan & Analysis
- i. Door Plan & Schedule
- j. Flooring Identification
- k. Engineer Reports

## 14 Section Fourteen: **Administration Building**

- a. Building Evolution
- b. Existing Site Plan
- c. Existing Floor Plan
- d. Building Systems Summary
- e. Needs Assessment
- f. ADA Needs Assessment
- g. Roof Plan & Analysis
- h. Door Plan & Schedule
- i. Flooring Identification
- j. Engineer Reports



## DISTRICT INFORMATION: PROCESS

---

Neenah Joint School District is located in east-central Wisconsin, within the City of Neenah. It is located within Winnebago County, and is near Lake Winnebago. The school district is comprised of one Charter Elementary School (grades K-5): Alliance Charter Elementary, one School of Early Learning (grades Pre-K and 4K): Washington School of Early Learning, and nine Elementary Schools (grades K-5): Clayton Elementary, Coolidge Elementary, Hoover Elementary, Lakeview Elementary, Roosevelt Elementary, Spring Road Elementary, Taft Elementary, Tullar Elementary, and Wilson Elementary. The District also includes two Middle Schools: Horace Mann Middle School (grade 6) and Shattuck Middle School (grades 7-8), a High School: Neenah High School (grades 9-12), and an administration building that serve over 6,200 students. The District also includes a Downtown Campus for the High School and a Transitional Education Center (TEC Program) that are not included in this study.

### Clayton Elementary:

2916 West Fairview Road  
Neenah, WI 54956

### Coolidge Elementary:

321 Alcott Drive  
Neenah, WI 54956

### Hoover Elementary:

950 Hunt Avenue  
Neenah, WI 54956

### Lakeview Elementary:

1645 South Commercial Street  
Neenah, WI 54956

### Roosevelt Elementary (Alliance Charter Elementary):

215 East Forest Avenue  
Neenah, WI 54956

### Spring Road Elementary:

1191 County Road II  
Neenah, WI 54956

### Taft Elementary:

133 South Western Avenue  
Neenah, WI 54956

### Tullar Elementary:

925 Tullar Road  
Neenah, WI 54956

### Washington School of Early Learning:

220 E. Franklin Ave.  
Neenah, WI 54956

### Wilson Elementary:

920 Higgins Ave.  
Neenah, WI 54956

### Horace Mann Middle School:

1021 Oak Street  
Neenah, WI 54956

### Shattuck Middle School:

600 Elm St.  
Neenah, WI 54956

### Neenah High School:

1275 Tullar Road  
Neenah, WI 54956

### Administration Building:

410 South Commercial Street  
Neenah, WI 54956

## Study Objective

In collaboration with Neenah Joint School District, Bray Associates Architects has conducted an analysis of the existing Elementary, Middle and High Schools and the Administration Building. Initial efforts are centered around identifying academic and facility needs by recognizing opportunities and challenges at each of the existing facilities. Subsequent phases may consider potential solutions to each of the needs assessed.

## Methodology

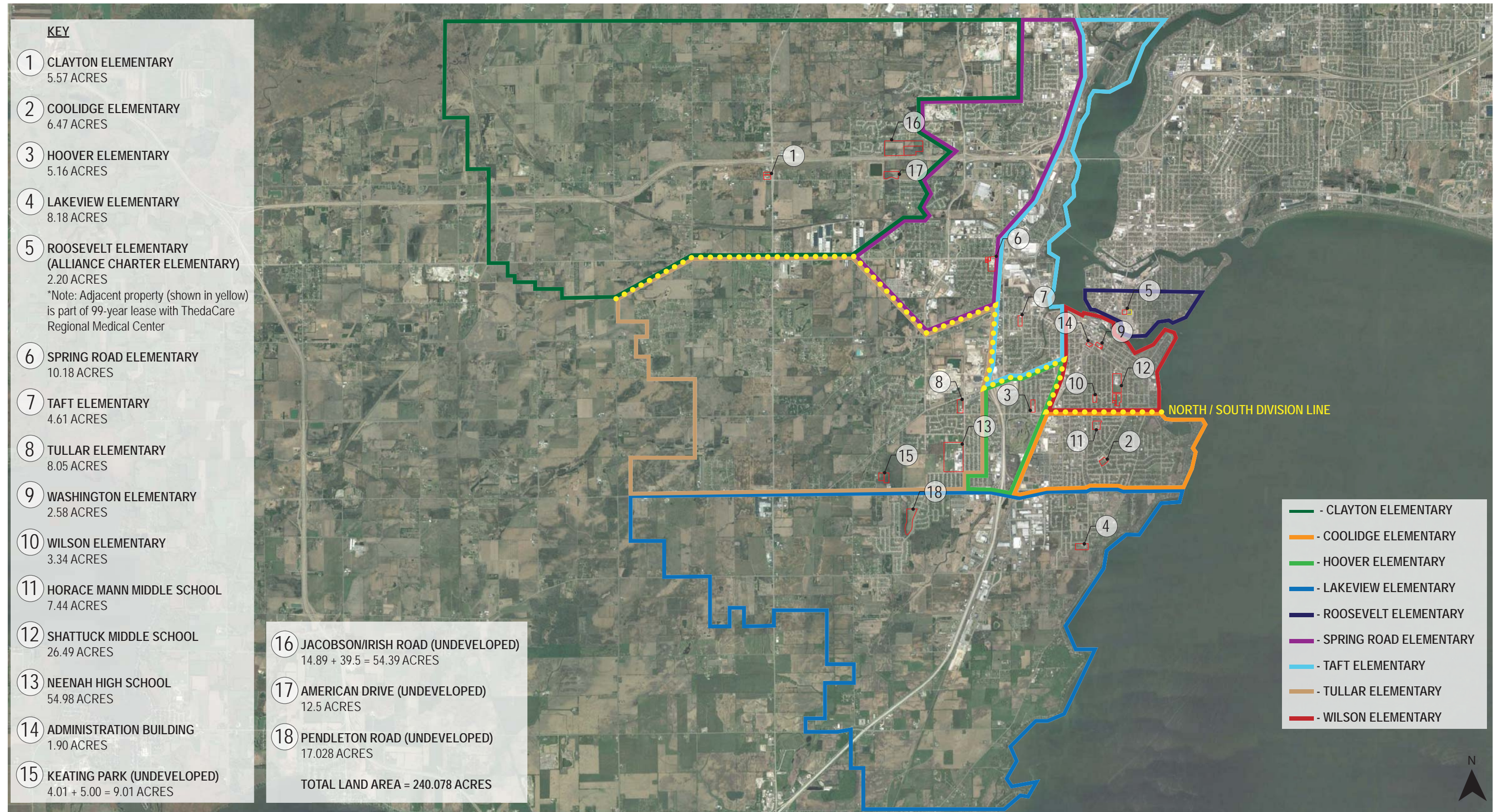
The study process facilitated by the Bray architectural team utilizes their educational planning and design experience in a wide approach to data collection and analysis.

The campus needs assessment involved interactive work sessions with District Leaders, Staff and Faculty with additional survey input from Elementary, Middle and High School Educators.

An existing facility condition review was also conducted by Bray Architects. This review was conducted through building tours and review of existing building drawings as well as previous planning and analysis.



# NEENAH, WISCONSIN: SCHOOL LOCATIONS & DISTRICT OWNED PROPERTY



SITE PLAN  
not to scale



# NEENAH JOINT SCHOOL DISTRICT: STUDENT ENROLLMENT

Grade	Pre-K	4 K	K	1st	2nd	3rd	4th	5th	6th	7th	8th	9th	10th	11th	12th	Total School Enrollment
Alliance Charter Elementary	X	X	22	23	17	23	15	18	X	X	X	X	X	X	X	118
Clayton Elementary	X	X	45	42	40	45	34	37	X	X	X	X	X	X	X	243
Coolidge Elementary	X	X	65	65	67	57	53	52	X	X	X	X	X	X	X	359
Hoover Elementary	X	43	46	45	40	43	38	46	X	X	X	X	X	X	X	301
Lakeview Elementary	X	X	66	68	66	56	64	52	X	X	X	X	X	X	X	372
Roosevelt Elementary	X	X	19	21	21	14	19	19	X	X	X	X	X	X	X	113
Spring Road Elementary	X	X	68	63	63	65	67	60	X	X	X	X	X	X	X	386
Taft Elementary	X	43	44	44	36	45	39	26	X	X	X	X	X	X	X	277
Tullar Elementary	X	X	67	67	65	64	73	63	X	X	X	X	X	X	X	399
Washington School of Early Learning	47	169	X	X	X	X	X	X	X	X	X	X	X	X	X	216
Wilson Elementary	X	43	42	45	45	52	49	48	X	X	X	X	X	X	X	324
Horace Mann Middle School	X	X	X	X	X	X	17	18	472	X	X	X	X	X	X	507
Shattuck Middle School	X	X	X	X	X	X	X	X	X	500	475	X	X	X	X	975
Neenah High School	X	X	X	X	X	X	X	X	X	X	X	514	536	467	474	1,991
Total Grade Level Enrollment	47	298	484	483	460	464	468	439	472	500	475	514	536	467	474	6,581

Grade	Enrollment 2015-2016
Pre-K - 5th Grades	3,143
6th - 8th Grades	1,447
9th - 12th Grades	1,991

**Notes:**

- 172 additional students are enrolled in off-site 4K programs.
- 7 additional students are enrolled in Second Chance, Enterprise, Quest, Waterwood, Goodwill, Treatment Facility and CESA
- 0 students are Title 1 funded
- 4th and 5th grade students at Horace Mann Middle School (included in the chart above) are enrolled in the magnet program.